

# THE RECORD

## Happy 100th Hillsborough . . .

*May 5th is Hillsborough's birthday; parade will follow on May 31st.*



*From the Paul Reynoso collection.*

During the month of May, Hillsborough residents will celebrate 100 years of gracious country living. History lessons for all ages, a time capsule, dedication of a new Centennial Park and a tour of several historic homes are all part of the birthday plans. The activities will culminate in the Parade of the

Century on Monday, May 31st (Memorial Day). During May, we have loaned our new museum exhibit, "From Millionaire Colony to Sunshine Suburb," to Hillsborough where it will be displayed at city hall. For more information see [www.hillsborough100.org](http://www.hillsborough100.org).

**Did you know?** A teenaged mother and her 31-year-old husband were the unlikely founders of Hillsborough, California, one of America's wealthiest towns. In 1850, newlyweds William Davis Merry (W.D.M.) Howard and Agnes Poett Howard became the sole owners of Rancho San Mateo, 6,500 acres that covered all of today's Hillsborough, as well as northern San Mateo and southern Burlingame. Howard Avenue in Burlingame and Howard Street in San Francisco are named after the Howards. The extended Howard-Poett-Redington clan became one of the pillars of early mid-Peninsula social life. In 1893, the Howards' oldest son, William H. Howard, helped form the Burlingame Country Club. In 1894, another of Agnes's sons, George Howard, Jr., designed the Burlingame train station. In 1896, William created Burlingame's first subdivision of modest-sized lots. The subdivision was south of Burlingame Ave. between El Camino Real and Dwight Road. (These Howards are not related to Charles Howard, the owner of the racehorse *Seabiscuit*, who moved to this area in 1925, approximately 75 years after W.D.M. Howard).

*See also "There Was Something About Agnes" on page 2.*

### NEXT QUARTERLY MEETING:

**Sun. May 16: 2-4 p.m.**

**at the**

**Peninsula Tennis Club**

(entrance at rear of BHS's south parking lot)

*... more on page 3*



New Acquisitions . . .

*pages 2-3*

**There was something about Agnes . . .**

*page 2*

In memory of . . .

*page 3*

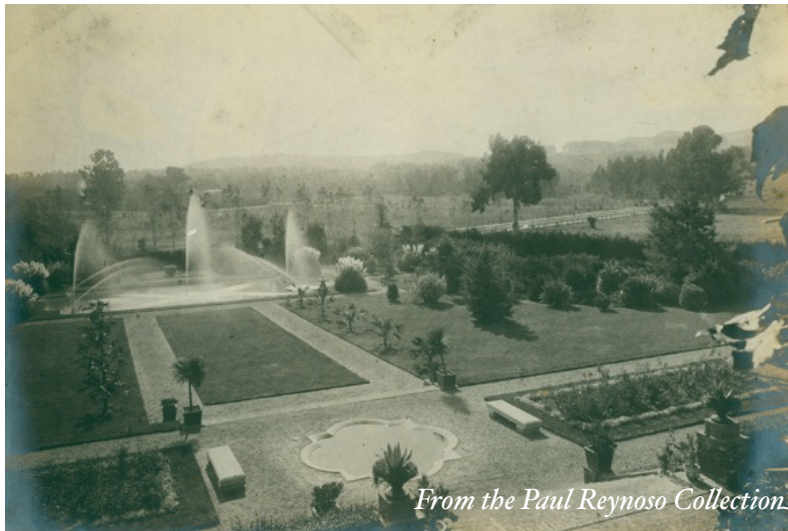
New members . . .

*page 3*

President's message . . .

*page 4*

**NEW ACQUISITIONS . . .**



*From the Paul Reynoso Collection*

The photo above is one of many photos recently donated by **Anita Barber**, the daughter of **Paul Reynoso** (more about Mr. Reynoso in our next issue). The photo shows the formal gardens at Severn Lodge, which was the home of Agnes Poett Howard Howard Bowie and her third husband, Henry Bowie (see below). **Thanks also to: Joanne Garrison** for a 82nd Annual Little Big Game program, Nov. 2009; **Russ Cohen** for a vintage Miller Drug glass bottle, for an invitation to Al Escoffier’s Retirement Tea, December 16, 2009, and for the novel “Burning Gold” c. 2006 by H. Paul Jeffers, featuring longtime Burlingame resident Jeannie Gilmore; **Ann Musso** for

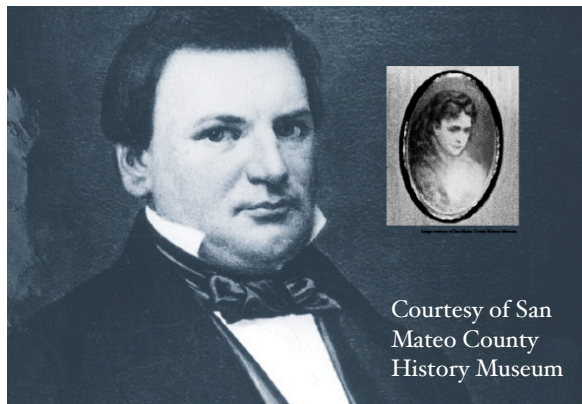
misc. city maps and written materials of various eras; **Jonette Middelton Brockway** for a scrapbook and collection of police badges belonging to her grandfather, retired Burlingame Police Inspector Richard Grunig; **Bob Swanson** for a vintage photo of California Drive businesses, including Route 66 and for a tool measuring stick advertising Don L. Morris Auto Parts c. 1940s; **Richard Damele** for a variety of framed *Seabiscuit* artwork (paintings and prints), Charles Howard race horse photos and memorabilia, two

framed and signed boxing photos belonging to Bobby Howard, “Thoroughbred Bloodlines book, Vol. II” by John F. Wall, “8 x 10” horse-racing photo including Charles and Marcela Howard, Bing Crosby, Tom Smith, and Red Pollard, Kayak II curio tray and vintage jockey helmet, framed dog show ribbon collection 1932-33 -- all from **Margaret Talevi’s** personal collection of items given to her and her husband from Charles and Marcela Howard c 1930s to 1950s; **John and Ellen Hunter** for a turn of the century home photo album of

**THERE WAS SOMETHING ABOUT AGNES . . .**

**William Davis Merry Howard:** W.D.M. Howard, a wealthy 31-year-old SF widower, liked to meet ships at the SF pier, ever alert for new business opportunities. However, in the summer of 1849, when he first saw Agnes, he saw opportunity of another sort. They were married within a month and within a year Agnes gave birth to their first son, William H. Howard.

**Agnes Poett:** In 1849, Agnes Poett was 16 years old when the ship that carried Agnes, her father and her siblings sailed into San Francisco Bay. The Poett family, residents of Chile, were en route to England where Agnes’s brother was to pursue an apprenticeship in civil engineering. The ship’s captain made a detour to San Francisco hoping to make a quick profit at Gold Rush prices. That proved to be a big mistake as the entire crew jumped ship, stranding the Poett family.



Courtesy of San Mateo County History Museum

**W.D.M. and Agnes Poett Howard,  
Founders of Hillsborough**

**Husband #2, George Howard:** After W.D.M. died in 1856, Agnes married his younger brother George. From 1856 until George’s death in 1878, the couple turned their mid-Peninsula ranch home *El Cerrito* into an epicenter of local society life and philanthropy. The Howards donated the land and construction costs for St. Matthew’s Episcopal Church, where both W.D.M. and George Howard are interred. The Howards also donated the land for the Congregational Church of San Mateo. For 15 years, George and Agnes employed John McLaren as their estate’s landscaper.

**Husband #3, Henry Bowie.**

The twice-widowed Agnes married Henry Bowie in 1879. Mr. Bowie was 15 years younger than Agnes. The couple lived at Severn Lodge, designed by Agnes’s son, George Jr. After Agnes died in 1893, Bowie lived for a number of years in Japan. He married a Japanese woman, wrote a book on Japanese painting and created a Japanese garden at Severn Lodge.

## ADVANTAGE BURLINGAME . . . THE HISTORY OF THE PENINSULA TENNIS CLUB



*Courtesy of the Peninsula Tennis Club*

### PLEASE JOIN US!

**Sunday, May 16th**

**2-4 p.m. at the PTC**

Don't let its unassuming entrance off the Burlingame High School parking lot fool you -- the Peninsula Tennis Club is one of the most storied clubs in America. The club started over 75 years ago on the family property of famed tennis star Helen Wills and her then-husband Frederick Moody, and ever since it has been hosting celebrity tennis stars. Jimmy Connors (pictured at left with Harold Solomon and Susan Anton), Billy Jean Moffit (King), Rosie Casals, Pete Sampras, Michael Chang and John McEnroe all played here. Local PTC tennis stars include Erik Van Dillen, Ann (Kiyomura) Hayashi, Gordy Stroud, Tom Brown, Dyle Anderson, Betty Cookson and the late Ken Beer.

### IN MEMORY OF . . .

Thank you to all the Constantino Families for their generous donation of \$500 in memory of their father, **Paul J. Constantino.**

### WELCOME TO NEW MEMBERS:

Benefactor Life: **Jeptha Wade**

Upgrades to Life: **John A. Chartz, Harry Chin, Mrs. Clare J. Colman and Betsy McGinn.**

New Individual: **Steve Conrad.**

*(Benefactor Life Memberships are \$500 and Life Memberships are \$150)*

### NEW ACQUISITIONS, *Continued from page 2 . . .*

The Crossways Estate and framed vintage map of Burlingame and San Mateo c. 1910, Candrian Map and Guide Co.; **The San Mateo County Historical Association** kindness of **Betsy Bogle** for a mounted photograph of SM Police Dept. picturing Burlingame's Irene Farrell Palamountain, member of the SMPD (1926), for a photocopy of Mr. and Mrs. Walter C. Palamountain, a news article saluting Irene as First Woman Police Officer in San Mateo County; also to SMCHA, kindness of **Vicky Lowden** for two scanned maps of the Hillsborough area (1928, 1930);

**Leigh and Francis Toldi** for Laurette Toldi's BHS yearbook, Commencement Exercises and profiles of Seniors (1939), for student writings and artwork (1936-1937), student handbooks (1931, 1939), Radio-Cinema Bulletin (1937-1942), *Burlingame B* student newspapers (1935-1939), and special Senior Editions (1938, 1939); **Linda Field** for Burlingame Tree Lighting event sign, Dec. 4, 2009, and for a framed photo enlargement of the 40-line streetcar at the San Mateo train station; **Martha and John Bensons' Kitchen Drawer**

turned up a Burlingame School District Lunch Menu from 1966; **Lee Livingston** for *Veritas* journal of Army Special Operations History 2A containing many of his photographs in Vietnam 1965-1967; **Sister Marilyn Gouailhardou, RSM, Mercy Center Archivist** for reference material and read-only CD of Kohl Mansion and the Sisters of Mercy Campus; and **Kent Lauder** for a "Kiddies' Gift Contest" ticket from the Broadway Theatre (1933) that he found inside a wall.

Burlingame Historical Society  
P.O. Box 144  
Burlingame, CA 94011

**Address Service Requested - Time Dated Material**

non-profit  
U.S. Postage  
PAID  
permit #286  
Burlingame, CA

## Calendar:

### Museum Open

1st Sunday of each month  
1:00 to 4:00 p.m.

Hillsborough 100th birthday  
Wednesday, May 5th, 4-6 p.m.

Hillsborough Home Tour  
Friday, May 14th, 10 - 3 p.m.

Hillsborough Parade  
Monday, May 31st, 10 - 1 p.m.

**Quarterly Meeting at the  
Peninsula Tennis Club  
Sunday, May 16th  
2 - 4 p.m.**

Art in the Park  
June 12th and 13th

---

THE BURLINGAME HISTORICAL SOCIETY

SPRING 2010, ISSUE # 122

---

## A Message from the President

It is with great pleasure but also trepidation that I step into the President's shoes. One could safely say that Russ put the Burlingame



Historical Society on the map, and it will be my charge to keep us there. The museum opening brought with it a plethora of new acquisitions, each inviting research and (more often than not) more questions. Our entire Archive volunteer crew: the filers, researchers and catalogers, is the most amazing, devoted group we've had in years, each contributing to help solve the mysteries that make research so enjoyable.

owners, but also to a variety of professionals, from authors to historians. In the past year, we have also been pleased and honored to provide practicum opportunities to students from the acclaimed Museum Studies Program at San Francisco State University, and have benefitted greatly from their work as well.

On a final note, of the many tasks that face us going into the future, the most challenging will be keeping up with the increasing costs of running an Archive and Museum while continuing to offer research services to the public at minimal cost. Thank you to our loyal membership for your trust and support for nearly three decades; we look forward to many more.

### Current Officers 2010:

President - Jennifer Pfaff  
VP - Technology and Membership  
Diane Condon-Wirgler  
VP - Museum  
Russ Cohen  
Treasurer - Cathy Baylock  
Secretary - Rosalie McCloud  
Living Histories -  
Cathy Foxhoven  
Special Projects -  
Bobbi Benson  
Corresponding Secretary -  
Mary Packard

We are very proud to offer first-class research not only to local home-

*Jennifer Pfaff*